



प.सं.०८०/०८१

च.नं

# शिवपुरी गाउँपालिका गाउँ कार्यपालिकाको कार्यालय



मिति: २०८०/१२/०६

ने सं ११४४ चिल्लाथ्व दशमी १०

सूचना !! सूचना सूचना !!!


आ.व.२०८०/०८१ को संघीय शसर्त स्वीकृत कार्यक्रम अनुसार कोल्डरुम/पोर्टेबल कोल्ड च्याम्बर निर्माण कार्यक्रम सम्बन्धी ५०% लागत साझेदारीमा "प्रदेश तथा स्थानिय तहमा सशर्त वित्तिय हस्तान्तरण भएका कृषि विकास कार्यक्रम सञ्चालन सम्बन्धी कार्यविधि २०८०" बमोजिम ईच्छुक कृषक, कृषि उद्यमी, कृषि उद्योगी, कृषक समूह, कृषि फर्म, कृषि सम्बन्धी सहकारी, कृषि संग सम्बन्धित समितिहरुले यो सूचना प्रकाशित भएको मितिले १५ दिन (२०८०/१२/२१) गते भित्र शिवपुरी गाउँपालिकाको कार्यालयमा कार्यालय समय भित्र तपशिल अनुसारका कागजातहरु संलग्न गरी निर्धारित ढाँचामा निवेदन दर्ता गर्न हुन सूचित गरिन्छ। साथै रित नपुगेका वा म्याद नाघी प्राप्त भएका निवेदनहरु छनौटका लागी समावेश नहुने व्यहोरा समेत जानकारी गराईन्छ।

तपशिल:

क्र.स	कार्यक्रमहरु	संघिय बजेट	सञ्चालन आयोजनाको विवरणहरु	अनुदान प्रतिशत र अधिकतम सीमा
१	कोल्डरुम/पोर्टेबल कोल्ड च्याम्बर निर्माण	१० लाख	१००० क्वारेट क्षमता, ५६ लीटर अथवा २० टन क्षमताको कोल्डरुम / पोर्टेबल कोल्ड च्याम्बर निर्माण।	कूल स्वीकृत लागत रकमको ५० प्रतिशत वा रु. १० लाख मध्ये जुन कम हुन्छ सोही बमोजिम हुनेछ।

आवश्यक कागजात तथा शर्तहरु:

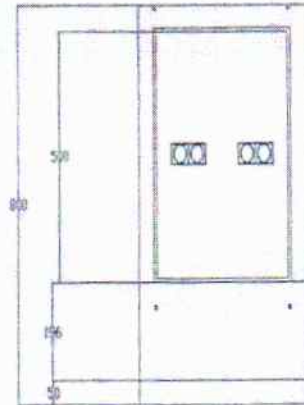
१. दर्ता प्रमाणपत्र प्रतिलिपि, पान नं. प्रमाणपत्र प्रतिलिपि, २०७९/०८० को करचुक्ता प्रमाणपत्र प्रतिलिपि।
२. कृषक समूह/साझेदारी कृषि फर्म र कृषि सहकारी संस्थाहरुको हकमा बैठक निर्णयको प्रतिलिपि।
३. जग्गाको क्षेत्रफल र स्वामित्व वा हकभोग खुल्ने प्रमाणपत्रको प्रतिलिपि।
४. वडा कार्यालयको सिफारिस।
५. संक्षिप्त कार्ययोजनाको प्रस्तावना।
६. कार्यक्रममा सहभागिताको लागि तोकिएको ढाँचामा निवेदन।
७. सुचना प्रकाशन पछि दर्ता भएका समूह/फर्म/ सहकारी/समितिहरुलाई अनुदान वितरणमा समावेश गराईने छैन।
८. यस भन्दा अगाडि सोही प्रकृतीको कार्यक्रमका लाभग्राही कृषक, कृषि उद्यमी, कृषि उद्योगी, कृषक समूह, कृषि फर्म, कृषि सम्बन्धी सहकारी, कृषि संग सम्बन्धित समितिहरुभन्दा नयाँलाई प्राथमिकता दिइनेछ।
९. कोल्डरुम/पोर्टेबल कोल्ड च्याम्बर निर्माणको लागि लागत अनुमान र कोल्डरुम/पोर्टेबल कोल्ड च्याम्बर निर्माणको लागि नक्शा यसै पत्र साथ संलग्न गरिएको छ।

  
वसन्त कार्की  
प्रमुख प्रशासकीय अधिकृत

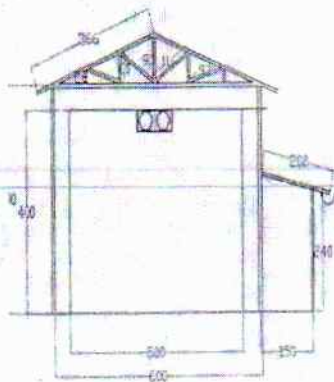
अनुसूची-२१

(परिच्छेद-३ को कृषि पंर्वाधार विकास तथा कृषि यान्त्रीकरण प्रवर्द्धन कार्यक्रम सँग सम्बन्धित)

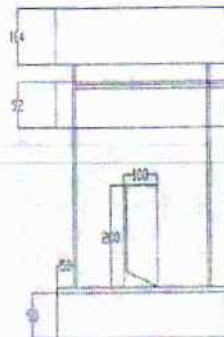
(क) कोल्डरुम/पोटेबल कोल्ड च्याम्बर निर्माण डिजाईन, नक्सा



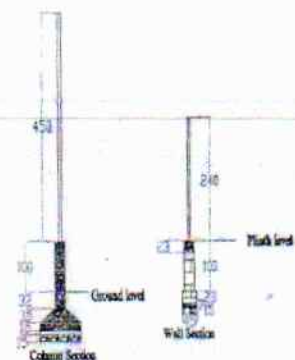
Top elevation



Side Elevation



Front Elevation



Cross-section

Wall Section



*[Signature]*

*[Signature]*

*[Signature]*

*[Signature]*



## (ख) कोल्डरूम/पोर्टेबल कोल्ड च्याम्बर निर्माण लागत अनुमान

Abstract of Cost Estimate Cold Chamber

Project: Construction of Cold Chamber

Capacity: 1000 Carat of Capacity 56 ltrs or Nearly 20 tons capacity

Item No.	Description	Unit	Quantity	Rate	Rate with Overhead	Rate	Amount
<b>A</b>	<b>TRUSS WORK</b>						
1.	Earthwork in excavation in medium soil including hauling disposal of soil upto distance of 30m and lift upto 1.5 m all complete in approval of site engineer.	cum	10.62	605.64	696.49	787.03	8,358.25
2.	Supplying and Soling Stone in proper line and level with sand filling all complete as per approved drawing, Specification and instruction of site engineer.	cum	10.61	3,502.50	4,027.88	4,551.50	48,291.40
3.	Plain cement Concrete (PCC) in 1:2:4 ratio for foundations and flooring with approved quality of cement, sand and machine crushed stone aggregate including supply of materials, mixing, laying, curing the work at least 7 days etc all complete as per approved drawing, Specification and instruction of site engineer.	cum	5.32	12,059.30	13,868.20	15,671.06	83,370.04
4.	Plain cement Concrete (PCC) for RCC works M 20 (1:1.5:3) for slab/lintels/columns/beams with approved quality of cement, sand and machine crushed stone aggregate including supply of materials, mixing, laying, curing the work at least 7 days etc all complete as per approved drawing, Specification and instruction of site engineer.	cum	4.33	15,431.50	17,746.23	20,053.23	86,830.50
5.	TMT steel reinforcement bar including supplying, straightening, cleaning, cutting, binding & fixing in position with annealed tying binding wire all complete as per approved drawing, Specification and instruction of site engineer.	MT	0.51	110,238.00	126,773.70	143,254.28	73,059.68
6.	Formwork, shuttering, centering with 19 mm thick waterproof ply board and steel post for all works necessary propping, scaffolding, staging, supporting inclusive of wedging and cutting holes for utilization till the support if fully unyielding nett all complete as per approved drawing, Specification and instruction of site engineer.	sqm	22.46	680.40	782.46	884.18	19,858.68
7.	Good quality local chimney made Brickwork in 1:4 C/S mortar up to Ground floor in perfect line level finish including supply of materials, wetting the bricks, racking the joints and curing the work for at least 7 days all complete as per approved drawing, Specification and instruction of site engineer.	cum	6.62	14,316.11	16,463.53	18,603.78	123,157.06
8.	Supplying and Laying of 12.5mm thick cement sand plaster in (1:4) ratio on wall of good finish including supply of materials, racking the joint, wetting of surfaces & curing the work at least 7days all complete as per approved drawing, Specification and instruction of site engineer.	sqm	25.00	368.49	423.76	478.85	11,971.32
9.	Earth filling and spreading in 15cm layer all complete as per approved drawing, Specification and instruction of site engineer.	cum	40.79	989.00	1,137.35	1,285.21	52,423.53
10.	Plain cement Concrete (PCC) (38mm) in 1:2:4ratio for foundations and flooring with approved quality of cement, sand and machine crushed stone aggregate including supply of materials, mixing, laying, curing the work at least 7 days etc all complete as per approved drawing, Specification and instruction of site engineer.	sqm	127.50	608.55	699.83	790.81	100,828.37



*[Signature]*

*[Signature]*

*[Signature]*

११९

*[Signature]*

*[Signature]*

*[Signature]*



11	Supplying and fitting of Iron Works with Red Oxide paint as per approved drawing, specification and instruction of site engineer.	kg	726.69	195.77	225.14	254.40	184,872.12
12	Supplying and fitting 0.5mm CGI colour sheet for Roof all complete as per approved drawing, specification and instruction of site engineer.	sqm	51.37	1,246.42	1,433.38	1,619.72	83,205.16
13	Supplying and fitting 0.45mm CGI plane sheet for ridge cover of 2 feet all complete as per approved drawing, specification and instruction of site engineer.	rm	5.50	1,580.94	1,818.08	2,054.43	11,299.37
14	Supplying and fitting 0.5mm CGI plane sheet for 150mm width, 450 mm gutter with 40x3 brackets, nut bolt, washer all complete as per approved drawing, specification and instruction of site engineer.	rm	5.50	1,463.59	1,683.13	1,901.94	10,460.64
15	Providing and fixing in position PVC pipes for soil, waste and rain water lines as per need including cutting the pipes to required length and fixing in position with PVC or MS clamps, joining pipes and fittings with rubber rings and joining solution etc. all complete as directed by site in-charge. (Panchakanya)				-	-	-
	75mm PVC pipe of 6 kg/cm <sup>2</sup>	rm	10.00	301.50	346.73	391.80	3,917.99
<b>B</b>	<b>Insulation Room</b>				-	-	-
16	Supply and complete installation of Outer wall puff panel 80 mm thickness 0.5 mm PCGI sheet insulated by 40 ± kg /m <sup>3</sup> thermocol with Tongue & Groove joint with Camlock System including heat insulation using silicon sealant etc complete	Sqm	110.00	5,734.75	6,594.96	5,734.75	630,822.50
17	Supply & complete installation of Sliding Door 1x2 m size and thickness 80 mm with all its necessary hardware and accessories	no	1.00	54,240.00	62,376.00	54,240.00	54,240.00
<b>C</b>	<b>Refrigeration Works</b>						
18	Supply and installation of Reciprocating /Scroll type Compressor of Make Emerson/Danfoss eq. make working Refrigerant R410a, R134a or equivalent having cooling capacity 24000 Btu/hr (at 4°C evaporation & Condensation at 45 °C) Forced Air cooled Condenser with fan, Copper tubings embided with Aluminium fins GI body powder coated panited, Oil Separator, liquid reciever, Solenoid valve, Filter dryer sight glass etc all complete necessary accessories as per site incharge	no	2.00	144,280.00		144,280.00	288,560.00
19	Supply and Installation of Indoor Evaporator unit (Blue cold/Carrier/Euro Air) pure copper tubings thermostatic expansion valve of Make Danfoss/Emerson Aluminium powder coated body with Stainless Steel SS 304 tray, energy efficient Multiple Propellor type Axial FAN 2 no per unit all necessary accessories as per site incharge	no	2.00	79,100.00		79,100.00	158,200.00
20	Installation of Refrigeration system with necessary hardwares and accessories	no	2.00	16,950.00		16,950.00	33,900.00
21	Refrigeration Controll Pannel microprocessor-based temperature indicator & Automatic temperature controller, temperature setting up/down limit controll, User parameter and Administration menu setting Automatic and manual controll fuction, intelligent compressure protection	no	1.00	28,250.00		28,250.00	28,250.00
22	Spplly and wiring/installation of Vapour proof tight 2 no in each chamber	no	1.00	1,600.00		1,600.00	1,600.00
<b>D</b>	<b>Indoor Assoceries</b>						



*[Signature]*

*[Signature]*

*[Signature]*

१२०

*[Signature]*

*[Signature]*  
सचिव

23	Supply and installation of humidifier: Centrifugal, Mist size 5-10-micron, single phase 70-90-watt capacity 5-6 lit/hr dimensions 350x350x360 mm weight 8 kg Air flow 165m3/hr, water level Auto control	no	1.00	81,200.00		81,200.00	81,200.00
24	Carbondioxide and Fresh Air damper 2 inline blower 150 CB	no	1.00	45,200.00		45,200.00	45,200.00
25	Supply and Installation of Pressue relief valve suitbale of room	no	1.00	6,000.00		6,000.00	6,000.00
E	Electricals						
26	Electrical Controll Pannel on off swich with indicators, Contactor, phase indicator with preventor, MCB, Protective Overload relay fuse etc complete, 3 no 15-amp MCB (single phase) for external equipments lights, motors, fan etc in Cleaning Grading Area	no	1.00	18,080.00		18,080.00	18,080.00
27	Site Clearance Works	sqm	200.00	9.00		12.00	2,400.00
			Grand Total				2250356.62

Note: The cost of Electricity or other power sources is not included in the above Estimate

*[Handwritten signatures and initials]*

7/11/18  
सचिव

